



CATALOG

— *Ultimate in Flexibility* —

JPsign Products Limited

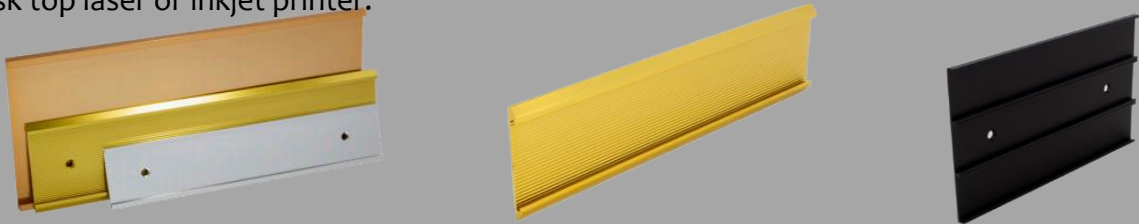
2024

HAPPY NEW YEAR

Wall Sign Holder

MODEL: DCW10 & DCW15 & DCW20 & DCW30
& DCWW15 & DCWW20
& DCW1010 & DCW1020& DCW2020

The wall holders are carefully extruded and anodized, with the color(polished/satin) choice of black, silver, gold and rose gold, etc..The holder accepts a standard 1.6mm (1/16”) engraved plate or a digitally printed label to be inserted behind a clear plastic plate, to print your own logo, name and text by using any desk top laser or inkjet printer.



Traditional Wall Sign Holder

P/N	Traditional Wall Sign Holder						
	Insert Height	Insert Thickness	Available Lengths				
DCW10	1.0"	1/16"	4"	6"	8"	10"	12"
	25.4mm	1.6mm	101.6mm	152.4mm	203.2mm	254.0mm	304.8mm
DCW15	1.5"	1/16"	4"	6"	8"	10"	12"
	38.1mm	1.6mm	101.6mm	152.4mm	203.2mm	254.0mm	304.8mm
DCW20	2.0"	1/16"	4"	6"	8"	10"	12"
	50.8mm	1.6mm	101.6mm	152.4mm	203.2mm	254.0mm	304.8mm
DCW30	3.0"	1/16"	4"	6"	8"	10"	12"
	76.2mm	1.6mm	101.6mm	152.4mm	203.2mm	254.0mm	304.8mm
Custom Lengths Available							



Ribbed Wall Sign Holder

P/N	Ribbed Wall Sign Holder				
	Insert Height	Insert Thickness	Available Lengths		
DCWW20	2.0"	1/16"	8"	10"	12"
	50.8mm	1.6mm	203.2mm	254.0mm	304.8mm
Custom Lengths Available					



2-Slot Wall Sign Holder

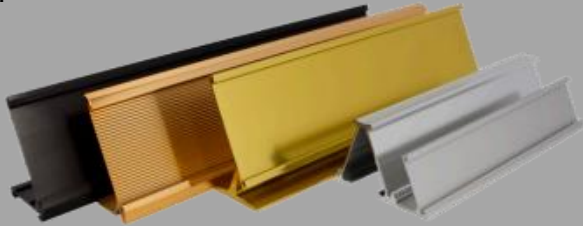
P/N	2-Slot Wall Sign Holder				
	Insert Height	Insert Thickness	Available Lengths		
DCW1010	1"+1"	1/16"	8"	10"	12"
	25.4mm+25.4mm	1.6mm	203.2mm	254.0mm	304.8mm
DCW1020	1"+2"	1/16"	8"	10"	12"
	25.4mm+50.8mm	1.6mm	203.2mm	254.0mm	304.8mm
Custom Lengths Available					



Desk Sign Holder

MODEL: DC075 & DC10 & DC15 & DC20 & DCB20 & DCR20

The desk holders are carefully extruded and anodized, with the color(polished/satin) choice of black, silver, gold and rose gold, etc.. The holder accepts a standard 1.6mm (1/16") engraved plate or a digitally printed label to be inserted behind a clear plastic plate, to print your own logo, name and text by using any desk top laser or inkjet printer.



Traditional Desk Sign Holder

Traditional Desk Sign Holder					
P/N	Insert Height	Insert Thickness	Standard Lengths		
DC075	0.75"	1/16"	8"	10"	12"
DC10	1.0"	1/16"	8"	10"	12"
DC15	1.5"	1/16"	8"	10"	12"
DC20	2.0"	1/16"	8"	10"	12"



Raised Desk Sign Holder

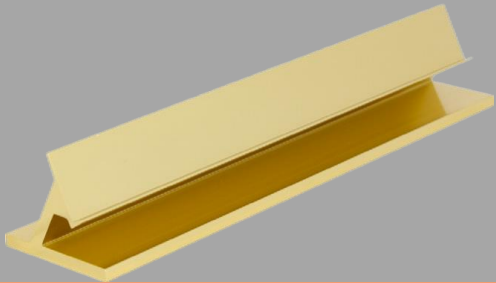
P/N	Raised Desk Sign Holder				
	Insert Height	Insert Thickness	Available Lengths		
DCR20	2.0"	1/16"	8"	10"	12"
	50.8mm	1.6mm	203.2mm	254.0mm	304.8mm
Custom Lengths Available					



Raised Desk Base

MODEL: BR

The raised desk base is designed to hold our signs, including model CC, CP, CU ,DCW, DCBW, frame sign and acrylic plates. The height of sign should not exceed 4". The aluminum base is anodized in color(polished/satin) of black, silver, gold and rose gold, etc..



Raised Desk Base			
P/N	Max Sign Height	Standard Lengths	
BR	4"	6"	9"
	101.6mm	152.4mm	228.6mm
Custom Lengths Available			



CC Wall Sign Holder with Raised Desk Base



CP Wall Sign Holder with Raised Desk Base



DC Wall Sign Holder with Raised Desk Base



CU Wall Sign Holder with Raised Desk Base



Frame Sign Holder with Raised Desk Base



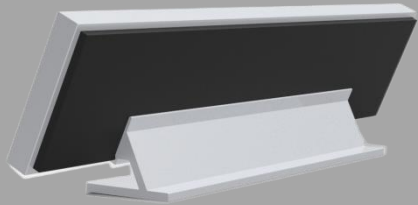
Magnetic Acrylic plates with Raised Desk Base



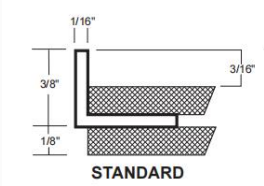
Frame Sign

MODEL: FSS & FSR &FSRR

The aluminum frame signs are custom-made to the desired specifications and size, the sign can be desk, wall, flag and ceiling.
The frame is carefully extruded and anodized, with the color(polished/satin) choice of black, silver, gold and rose gold, etc..



- ♦ Frame,square corners, standard
For 1/16" insert
Filter: Fiberboard
Backer: ABS board



- ♦ Frame, radius corners , 3/8" standard
For 1/16" insert
Filter: PP foam board; R=3/8 "



- ♦ Frame, radius corners ,1/2"
For 1/16" insert
Filter: PP foam board; R=1/2 "



Frame Sign		
Type	Single Sided	Double Sided
Wall Sign	YES	NIL
Desk Sign	YES	YES
Flag Sign	YES	YES
Ceiling Sign	YES	YES
Custom Sizes, Desk sign -Max Height of 4"(101.6mm)		

Frame Wall Sign



Frame Sign
with Raised Desk Base



Frame Flag Sign
with Combo Bracket



Frame Ceiling Sign
with Combo Bracket



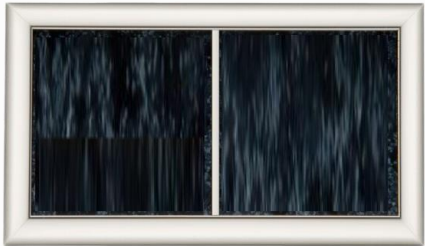
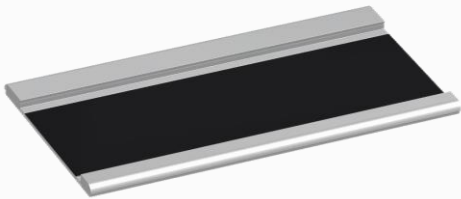
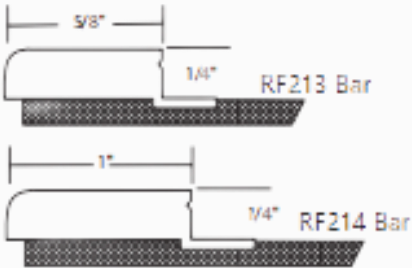
Decorative Bars

MODEL: RF

Decorative bars create bold metallic borders for the signs. Options consist of bars only, 2-sided frame, and 4-sided frame. One can use equal size bars or mix two different sizes for 2-Sided frames. All two sizes can be made in to a complete four-sided frame, and all formats can snap in a matte clear lens. The aluminum bars are anodized in color(polished/satin) of black, silver, gold and rose gold, etc..

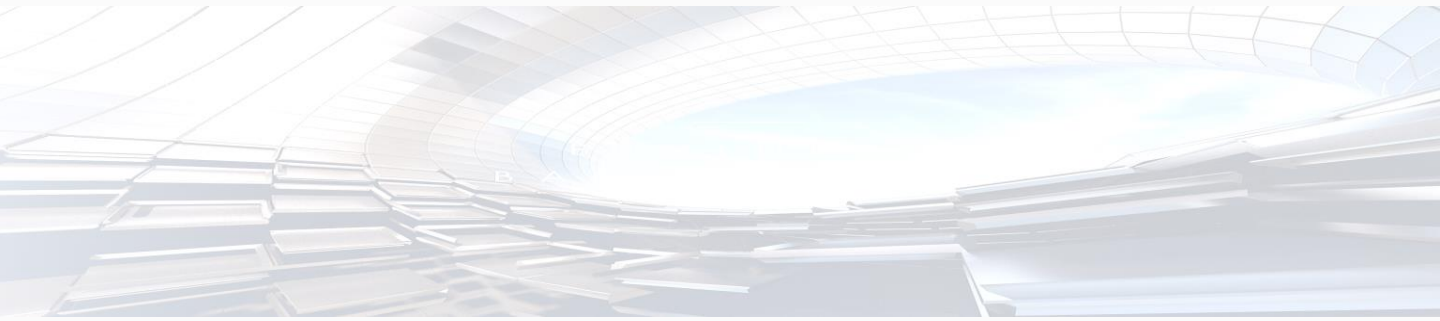


Frame Style	
1 Bar Only	
2-sided Frame	
4-Sided Frame	
Minimum Frame Size	2"*4"
Maximum Frame Size	39"*39"



Optional:

- The divider bar offers an integrated system which allows the frame sign to be divided into separate slats within one insert.
- Mounted holes
- Metal plate Inside for magnetic inserts
- .060" matte/clear lens optional, for paper, 1/32", 1/16", 1/8" material thicknesses.
- 1/16"-1/8" matte clear lens can be snapped in.



Corridor Bracket

MODEL: BC

Corridor brackets are designed to make corridor wayfinding signage simple. Includes screws to hold 1/8" thick materials. The aluminum brackets are anodized in color (polished/satin) of black, silver, gold and rose gold, etc..



Corridor Bracket								
Available Lengths								
2"	3"	4"	5"	6"	8"	10"	12"	24.5"
50.8mm	76.2mm	101.6mm	127.0mm	152.4mm	203.2mm	254.0mm	304.8mm	622.3mm
Custom Lengths Available								



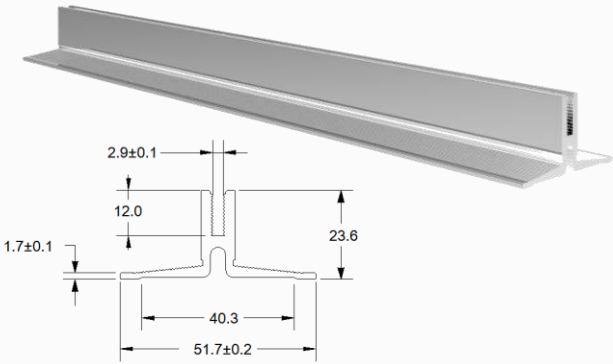
Corridor-Maximum extension from wall of 12", Single or Double Sided.



Combo Bracket , double sided CU sign & Double sided Frame Sign

MODEL: BCN

The combo bracket is perfect for both corridor and ceiling mounted signage . Comes with a BCN gripholder with a CU20 mounting bracket which allows mounting screws to be concealed. This bracket is perfect for both corridor and ceiling mounted signage. The aluminum brackets are anodized in color (polished/satin) of black, silver, gold and rose gold, etc.. This bracket only allow 3.0mm thickness back plate, nameplate or message to be mounted vertically.



Combo Bracket				
Available Lengths				
6"	8"	10"	12"	24.5"
152.4mm	203.2mm	254.0mm	304.8mm	622.3mm
Custom Lengths Available				

Double Sided CU Desk Sign With Combo Bracket



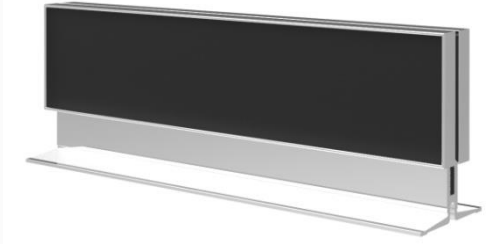
Double Sided CU Flag Sign With Combo Bracket



Double Sided CU Ceiling Sign With Combo Bracket



Double Sided Frame Desk Sign With Combo Bracket



Double Sided Frame Desk Sign With Combo Bracket



Double Sided Frame Desk Sign With Combo Bracket



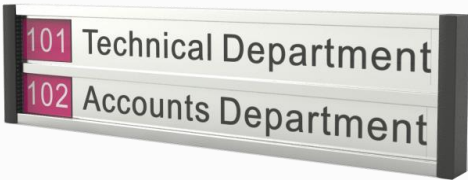
Divider Bar

MODEL: FB

The aluminum divider bar offers an integrated system which allows the insert to be divided into separate changeable slats within one sign, by simply sticking the flat bar directly on the plastic, metal surface at your desired position.

The divider bar is anodized in color (polished/satin) of black, silver, gold and rose gold, etc..

Divider Bar					
Size	Available Lengths				
1/5"	6"	8"	10"	12"	24.5"
5mm	152.4mm	203.2mm	254.0mm	304.8mm	622.3mm
Custom Lengths Available					



Divider Bar Assembly

Slide the insert into stand firstly, stick the divider bar by adhesive on the insert at your desired position, then complete the sign by closing both ends by the caps.



CU Series - DIY your own sign

Wall & Desk & Flag & Ceiling & Slide Sign Holder

CU series is versatility, the components can be combined into desk sign, wall sign, flag sign and ceiling sign with slide and dividing function.

The stand is compatible with insert plate thickness less than 1.9mm (3/40") or a digitally printed label to be inserted behind a clear plastic plate, which ensures you can design and print your own logo, name and text by using any desk top laser or inkjet printer.

The aluminum stands and bars are anodized in color (polished/satin) of black, silver, gold and rose gold, etc..



DESK & Wall SIGN

The combinations of wall caps and desk caps complete the sign by closing both ends and allowing for mounting on any flat surface, or enabling the sign to stand at the perfect angle on any desk. Wall mounted with screws is optional.

FLAG & Ceiling SIGN

CU flag & ceiling mounted signs are double sided, using CU sign's components such as aluminum stands, wall caps and additional combo bracket, fiber or plastic board and screws which are fast, easy and simple to assemble and install.

Slide Bar

Each 2", 4" & 6" CU sign is designed to use one additional slide bar to add slide function of giving a dual message.

Divider Bar

The divider bar offers an integrated system which allows CU series sign holder to be divided into separate changeable slats within one sign.



CU Series - DIY your own sign

Wall & Desk Sign Holder

MODEL: CU10W, CU20W,CU10D, CU20D

CU wall & desk signs' components are included CU's aluminum stands and caps. The wall caps complete the sign by closing both ends and allowing for mounting on any flat surface. The triangular desk caps are utilized to close the ends while enabling the sign to stand at the perfect angle on any desk. Both wall and desk caps can be removed for easy changes of the plate or label at any time. With the PVC slider, the sign can be used as the slide sign.

1" CU Wall & Desk Sign

Part #	Insert Size		Available Lengths		
	Insert Height	Insert Thickness			
CU10W	1.0"	≤3/40"	5"	8"	10"
&CU10D	25.4mm	≤1.9mm	127.0mm	203.2mm	254.0mm
Components: 1" stand*1pcs, 1" wall cap*2pcs, 1" left desk cap*1pcs, 1" right desk cap*1pcs, adhesive tape * 2pcs					
Custom Lengths Available					



1" CU Sign with PVC Slider

2" CU Wall & Desk Sign

Part #	Insert Size		Available Lengths		
	Insert Height	Insert Thickness			
CU20W	2.0"	≤3/40"	8"	10"	12"
&CU20D	50.8mm	≤1.9mm	203.2mm	254.0mm	304.8mm
Components: 2" stand*1pcs, 2" wall cap*2pcs, 2" left desk cap*1pcs, 2" right desk cap*1pcs, adhesive tape*2pcs					
Custom Lengths Available					



2" CU Sign with PVC Slider

CU Series - DIY your own sign

Wall & Desk Sign Holder

MODEL:CU4oW, CU6oW, CU4oD, CU6oD

CU wall & desk signs' components are included CU's aluminum stands and caps. The wall caps complete the sign by closing both ends and allowing for mounting on any flat surface. The triangular desk caps are utilized to close the ends while enabling the sign to stand at the perfect angle on any desk. Both wall and desk caps can be removed for easy changes of the plate or label at any time. With the PVC slider, the sign can be used as the slide sign.

4" CU Wall & Desk Sign

Part #	Insert Size		Available Lengths		
	Insert Height	Insert Thickness			
CU4oW	4.0"	≤3/40"	6"	8"	12"
&CU4oD	101.6mm	≤1.9mm	152.4mm	203.2mm	304.8mm
Components: 4" stand*1pcs, 2" wall cap*4pcs, 2" left desk cap*1pcs, 2" right desk cap*1pcs, adhesive tape*4pcs					
Custom Lengths Available					

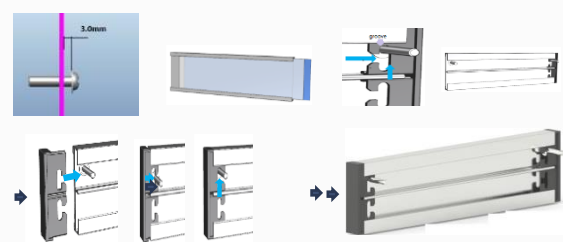
6" CU Wall & Desk Sign

Part #	Insert Size		Available Lengths		
	Insert Height	Insert Thickness			
CU6oW	6.0"	≤3/40"	6"	8"	12"
&CU6oD	152.4mm	≤1.9mm	152.4mm	203.2mm	304.8mm
Components: 6" stand*1pcs, 3" wall cap*4pcs, 3" left desk cap*1pcs, 3" right desk cap*1pcs, adhesive tape*4pcs					
Custom Lengths Available					



Optional Wall Mounted with Screws

Fix 2pcs screws (4*30mm) & plugs on the wall with 0.12" (3.0mm) gaps, slide the insert into the stand, one wall cap clips with the screw head then install into the stand, align the groove of other wall cap to clip into the screw head of the other side, close other end of the body.



Holder Length	Measurement of central hole for the installation of 2pcs screws
5"	4.45" (113.0mm)
6"	5.45" (138.4mm)
8"	7.45" (189.2mm)
10"	9.45" (240.0mm)
12"	11.45" (290.8mm)

CU Series - DIY your own sign
CU Flag Mounted Double Sided Sign Holder

MODEL: CU40F & CU60F

JPSIGN’s flag mounted signs are double sided, using CU sign’s components such as aluminum stands, wall caps, combo bracket, and other accessories which is fast, easy and simple to assemble and install, ideal for room identification, emergency signage and more.

The signs with the removable caps have the advantage of easy changes of inserts at any time, accepting varieties of insert materials such as paper, metal, plastic and our inkjet/laser printable film.

Assembled CU flag stands are available to be made to order, simply install 2” CU stand onto the wall by 2pcs KA4*30 screws then lock assembled CU flag stands with inserts by 1pc M3*5 screw.



Part #	Insert Size		Available Lengths		
	Insert Height	Insert Thickness			
CU40F	4.0"	≤3/40"	6"	8"	12"
	101.6mm	≤1.9mm	152.4mm	203.2mm	304.8mm
	Components: 4" stand*2pcs,2" wall cap*8pcs, 2" *4.36"(50.8mm*111mm) stand*1pcs, 4.33" (110mm) combo bracket*1pcs, KA4*30 screw & plug *2pcs, screw M3*5*1pcs, 1/8"(3.2mm) fiber or plastic board*1pcs, glue.				
CU60F	6.0"	≤3/40"	6"	8"	12"
	152.4mm	≤1.9mm	152.4mm	203.2mm	304.8mm
	Components: 6" stand*2pcs,3" wall cap*8pcs, 2" *6.37"(50.8mm*161.8mm) stand*1pcs, 6.33" (160.8mm) combo bracket*1pcs, screw * plug KA4*30*2pcs, screw M3*5*1pcs, 1/8"(3.2mm) fiber or plastic board*1pcs, glue.				
Custom Lengths Available					

Flag Sign Assembly

1. Assembly CU holder assy.. Assemble 2 sets CU sign holders with combo bracket and fiber board.

1.1 Glue the fiber or plastic board onto the combo bracket.
- 1.2. Prepare 2 sets of CU holder assy. with their inserts, glue them with fiberboard, 1 set on each side.
2. Install 2” CU stand onto the wall by 2pcs KA4*30 screws



CU Series - DIY your own sign

CU Ceiling Mounted Double Sided Sign Holder

MODEL: CU40C & CU60FC

JPSIGN's ceiling mounted signs are double sided, using CU sign's components such as aluminum stands, wall caps, combo bracket and other accessories which is fast, easy and simple to assemble and install, ideal for room identification, emergency signage and more.

The signs with the removable caps have the advantage of easy changes of inserts at any time, accepting varieties of insert materials such as paper, metal, plastic and our inkjet/laser printable film.

Assembled CU ceiling stands are available to be made to order, simply install 2" CU stand onto the wall by 2pcs KA4*30 screws then lock assembled CU flag stands with inserts by 1pc M3*5 screw.




Part #	Insert Size		Available Lengths		
	Insert Height	Insert Thickness			
CU40C	4.0"	≤3/40"	6"	8"	12"
	101.6mm	≤1.9mm	152.4mm	203.2mm	304.8mm
	Components: 4" stand*2pcs,2" wall cap*8pcs, 2" *4.36"(50.8mm*111mm) stand*1pcs, 4.33" (110mm) combo bracket*1pcs, KA4*30 screw & plug *2pcs, screw M3*5*1pcs, 1/8"(3.2mm) fiber or plastic board*1pcs,glue.				
CU60C	6.0"	≤3/40"	6"	8"	12"
	152.4mm	≤1.9mm	152.4mm	203.2mm	304.8mm
	Components: 4" stand*2pcs,2" wall cap*8pcs, 2" *4.36"(50.8mm*111mm) stand*1pcs, 4.33" (110mm) combo bracket*1pcs, KA4*30 screw & plug *2pcs, screw M3*5*1pcs, 1/8"(3.2mm) fiber or plastic board*1pcs, glue.				
Custom Lengths Available					


Ceiling Sign Assembly


1. Assemble 2 sets CU sign holders with combo bracket and fiber/plastic board.


1.1 Glue the fiber or plastic board onto the combo bracket.




1.2. Prepare 2 sets of CU holder assy. with their inserts, glue them with fiberboard, 1 set on each side.


2. Install 2" CU stand onto the ceiling by 2pcs PA4*30 screws


3. Lock CU holder assy. with 2" CU stand by 1pc M3*5 screw.





CU Series - DIY your own sign

CU Slide Sign Holder & Slide Bar

MODEL: SPCU & TB

CU signs are designed to be used as slide sign which gives a dual message, slider moves across to cover which option is not relevant at that time. The stand is compatible the insert thickness less than 1.9mm (3/40").

➤ Slide Sign with PVC Slider

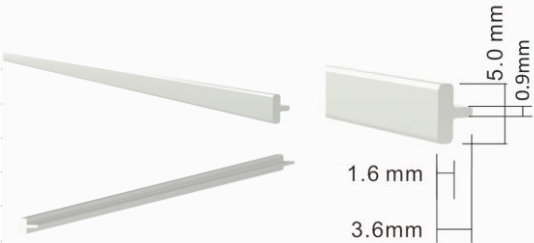
With the PVC slider, each CU sign can be used as single slide sign.



➤ Slide Sign with CU Slide Bar & PVC Slider

Each CU sign except 1" is designed to use one additional slide bar, the inserts' height used in the stand must avoid as an integer half of stand height.

CU Slide Bar					
Size	Available Lengths				
1/5"	6.3"	8.3"	10.3"	12.3"	24.5"
5mm	160.0mm	210.8mm	261.6mm	312.4mm	622.3mm
Custom Lengths Available					



CU Slide Bar Assembly

1. Install one side's wall cap 2. Slide in the insert, PVC slider. 3. Jack-in the slide bar into the cap groove nearby the plate edge, make sure that the slot on one side of slide bar is close to the insert & PVC slider 4. Fix the other side.



CC & CP Series - DIY your own sign

CP & CC WALL & DESK SIGN & SLIDE SIGN

MODEL: CP25W, CP25D & CC20W, CC20D & SPCP25 & SPCC20

The carefully extruded and anodized aluminum stands are compatible with insert plate thickness less than 1.9mm(3/40”) or the digitally printed label to be inserted behind a clear plastic plate, which ensures you can design and print your own logo, name and text by using any desk top laser or inkjet printer.

Our patented end caps come in two styles. The wall caps complete the sign by closing both ends and allowing for mounting on any flat surface. The triangular desk caps are utilized to close the ends while enabling the sign to stand at the perfect angle on any desk. Both wall and desk caps can be removed for easy changes of the plate or label at any time.

The aluminum stands are anodized in color(polished/satin) of black, silver, gold and rose gold, etc..

Optional PVC slider gives a dual message, slider moves across to cover which option is not relevant at that time.

CC Wall & Desk Sign Holder

Model	Insert Size		Available Lengths		
	A	B			
CC20W & CC20D	2"	≤3/40"	8"	10"	12"
	50.8mm	≤1.9mm	203.2mm	254mm	304.8mm
Components: 2" stand*1pcs, 2" wall cap*2pcs, 2" left desk cap*1pcs, 2" right desk cap*1pcs, adhesive tape*4pcs					
Custom Lengths Available					



CP Wall & Desk Sign Holder

Model	Insert Size		Available Lengths		
	A	B			
CP25W & CP25D	2.5"	≤3/40"	8"	10"	12"
	63.5mm	≤1.9mm	203.2mm	254mm	304.8mm
Components: 2" stand*1pcs, 2" wall cap*2pcs, 2" left desk cap*1pcs, 2" right desk cap*1pcs, adhesive tape*4pcs					
Custom Lengths Available					



CC Sign with PVC Slider



CP Sign with PVC Slider

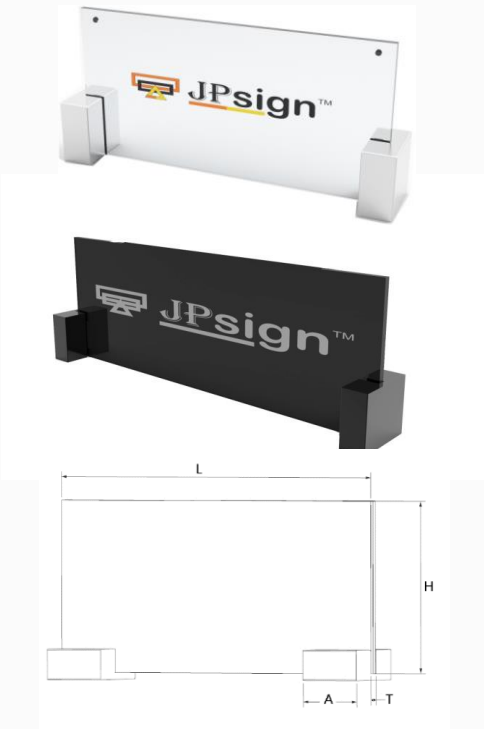
Deluxe Acrylic Desk Sign Holder with Aluminum Base

MODLE: SC & RW

Our deluxe acrylic sign holders with aluminum stands feature modern design and excellent durability. Removable stands make the holder easier to change the insert. The stands are compatible with the plates total thickness between 5.5mm~6.2mm (0.217"~0.244"), or the clear acrylic plates accept a digitally printed label to be inserted. The aluminum stands are anodized in color(polished/satin) of black, silver, gold and rose gold, etc..

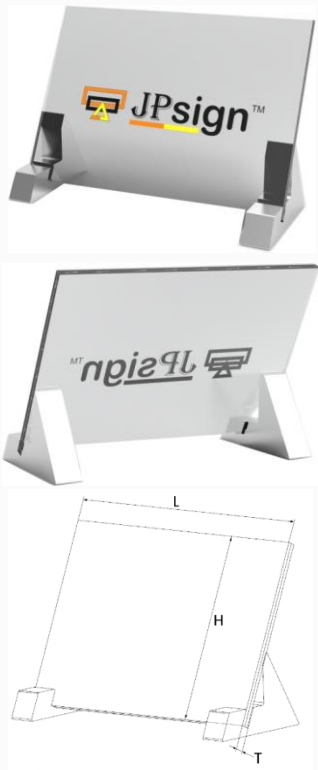
SC Deluxe Acrylic Sign Holder with Aluminum Bases

Model	Insert Size (2pcs/set)			Aluminum Stand Height
	H	L	T	A
SCD25080	2.5"	8"	0.217"-0.244"	3/4"
	50.8mm	203.2mm	5.5mm-6.2mm	19mm
SCD30080	3"	8"	0.217"-0.244"	3/4"
	76.2mm	203.2mm	5.5mm-6.2mm	19mm
SCD40080	4"	8"	0.217"-0.244"	1-3/8"
	101.6mm	203.2mm	5.5mm-6.2mm	35mm
SCD55080	5.5"	8"	0.217"-0.244"	1-3/8"
	139.7mm	203.2mm	5.5mm-6.2mm	35mm
SCDA5	5.8"	8.3"	0.217"-0.244"	1-3/8"
	148mm	210mm	5.5mm-6.2mm	35mm
SCDA4	8.3"	11.7"	0.217"-0.244"	1-3/8"
	210mm	297mm	5.5mm-6.2mm	35mm



RW Deluxe Acrylic Sign Holder with Aluminum Bases

Model	Insert Size (2pcs/set)		
	H	L	T
RW30080	3"	8"	0.217"-0.244"
	76.2mm	203.2mm	5.5mm-6.2mm
RW40080	4"	8"	0.217"-0.244"
	101.6mm	203.2mm	5.5mm-6.2mm
RW55080	5.5"	8"	0.217"-0.244"
	139.7mm	203.2mm	5.5mm-6.2mm
RWA5	5.8"	8.3"	0.217"-0.244"
	148mm	210mm	5.5mm-6.2mm
RWA4	8.3"	11.7"	0.217"-0.244"
	210mm	297mm	5.5mm-6.2mm



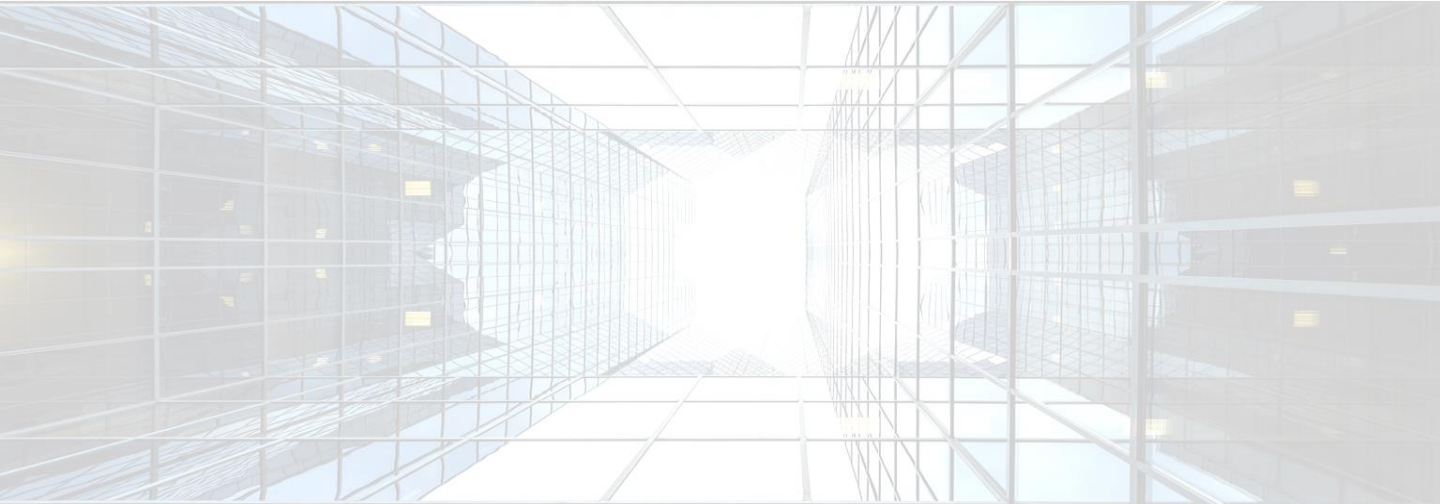
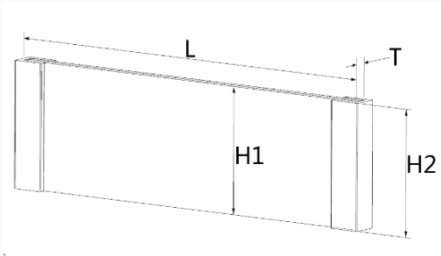
Deluxe Acrylic Desk Sign Holder with Aluminum Base

MODLE: SCW

The deluxe acrylic wall sign holder with aluminum stands features modern design and excellent durability. The holder is easier to change the insert. The stands are compatible with the plates total thickness between 5.5mm~6.2mm (0.217"~0.244"), or the clear acrylic plates accept a digitally printed label to be inserted. The aluminum stands are anodized in color(polished/satin) of black, silver, gold and rose gold, etc.. Chrome plating is optional subjected to the quantity.



Model	Insert Size (2pcs/set)			Aluminum Stands Height
	L	H1	T	H2
SCW40080	4"	8"	0.24"	1-3/8"
	101.6mm	203.2mm	6mm	35mm
SCW55080	5.5"	8"	0.24"	1-3/8"
	139.7mm	203.2mm	6mm	35mm
SCWA5	5.8"	8.3"	0.24"	1-3/8"
	148mm	210mm	6mm	35mm
SCWA4	8.3"	11.7"	0.24"	1-3/8"
	210mm	297mm	6mm	35mm



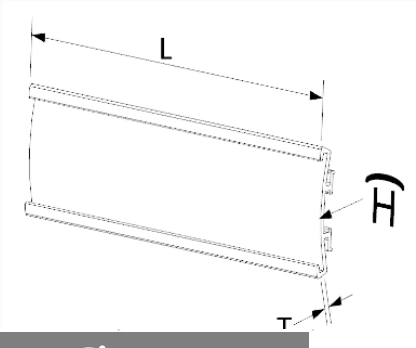
Metal Name Badge

MODLE: NB2070 & NB80 & NB2872 & NB3272

The carefully extruded and anodized aluminum name badges are compatible with the insert thickness less than 0.9mm (0.035”) or a digitally printed label to be inserted behind a clear plastic film. The name badges are easy to reuse by changing the insert.

The aluminum badges are anodized in silver, black and gold, other colors on request subjected to the quantity.

Badge holders are with the choice of pin & magnets, optional N50 magnets.



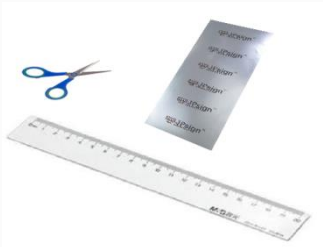
Model	Badge Size	Insert Size	
	Height(Arc.)*Length	Height*Length	Thickness
NB2070	0.886"*2.756"	0.787*2.756	≤0.035"
	22mm*70mm	20mm*70mm	(≤0.9mm)
NB2180	0.984"*3.150"	0.827"*3.150"	≤0.035"
	25mm*80mm	21mm*80mm	(≤0.9mm)
NB2872	1.220"*2.835"	1.100"*2.835"	≤0.035"
	31mm*72mm	28mm*72mm	(≤0.9mm)
NB3272	1.378"*2.835"	1.260"*2.835"	≤0.035"
	35mm*72mm	32mm*72mm	(≤0.9mm)

Printable PET Film, DIY your own sign and name badge

With the insert sheet and our printing templates, you can design and print your own logo, name and text by inkjet printer as recommended. The template is available in our website for download.
Available size: Envelop 10, A5, A4, A3, Rolls
Available Color: transparent, silver, gold, brushed silver, brushed gold for single sided printing by ink printer & white for double sided printing by laser printer



DO-IT-YOURSELF



Design and print your name, logo, and graphics on the film. The template is available and recommended.

Use the ruler, slice insert from the film or paper using rolling blade or scissor.



Insert the plastic plate together with the label.

Wood stamp without pad

MODEL: SM

The traditional wooden stamps are made of high qualified wooden, durable to use. Available in 5 popular sizes, design and sizes are customizable subjected to the quntity. By engraving pattern or words you like on the rubber pad, this product is great for personalizing



Wood stamp without pad

P/N	Wooden Stamp without Pad	
	Base Type	Size
SMR4040	Round	Ø 40mm
SMR4848	Round	Ø 48mm
SMS0825	Rectangular	8x 25mm
SMS1850	Rectangular	18x 50mm
SMS2060	Rectangular	20x 60mm
SMS2560	Rectangular	25x 60mm
SMS4040	Rectangular	40x 40mm
SMS2580	Rectangular	25x 80mm
SMS5050	Rectangular	50x 50mm
SMS3575	Rectangular	35x 75mm
Custom Sizes Available		



Wood stamp handle

MODEL: SMH

The popular handle are with graceful body, durable finish,the distinctive appearance and outstanding quality will enhance the value of any stamp. Available in 5 popular sizes, design and sizes are customizable subjected to the quntity.



Wood stamp without pad

P/N	Wood Stamp Handle	
	Handle size	Drill size
SMH001	1-5/16" X 2"	1/4"
SMH002	1-1/16" X 2-1/2"	5/16"
SMH003	1-3/8" X 2-3/4"	5/16"
SMH004	1-7/16" X 3"	3/8"
SMH005	1-13/16" X 3"	3/8"
Black, Walnut or Blonde color, other color on request		
Custom Sizes Available		



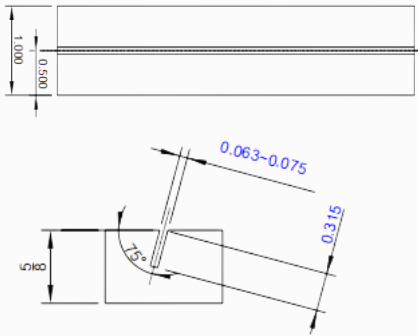
Wooden Sign Base

MODEL: BS

Our wooden sign bases are made of wooden or bamboo, custom made including color and length subjected to the quantity. Whether you choose to place the base on the portrait or landscape margins- it doesn't matter as they are a universal fit.



P/N	Wooden Sign Base			
	Width	Height	Length	Insert Thickness
BS01004	1"	5/8"	4"	0.063-0.075
BS01125	1	5/8"	1.25"	
Custom Sizes Available				



Wooden Box

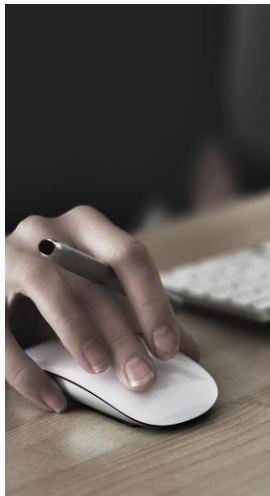
MODEL: WB

Our wooden boxes are made of high qualified wood/bamboo, durable to use. Available in the popular sizes, design and sizes are customizable subjected to the quntity.



P/N	Wooden Box		
	Length	Width	Height
WB985939	9.8"	5.9"	3.9"
WB454327	4.5"	4.3"	2.7"
Custom Sizes Available			





Sales Office

2616-2617, Tower A, Galaxy Century Plaza, 3069 Cai Tian Road
Shenzhen 518026, China

eMail: sales@jpsignproducts.com

Tel: +86 755 82933309



Manufacroty

5th Floor, Building 6, Nanyuan Science and Technology Park
247 Qingfeng Road, Qingxi
Dongguan, Guangdong 523661, China

Tel/Fax: 0769-81275616

Ultimate in Flexibility